



Department of Public Works  
**Engineering Division**  
 Robert F. Phillips, P.E., City Engineer

City-County Building, Room 115  
 210 Martin Luther King, Jr. Boulevard  
 Madison, Wisconsin 53703  
 Phone: (608) 266-4751  
 Fax: (608) 264-9275  
[engineering@cityofmadison.com](mailto:engineering@cityofmadison.com)  
[www.cityofmadison.com/engineering](http://www.cityofmadison.com/engineering)

**Deputy City Engineer**  
 Gregory T. Fries, P.E.

**Deputy Division Manager**  
 Kathleen M. Cryan

**Principal Engineer 2**  
 Christopher J. Petykowski, P.E.  
 John S. Fahrney, P.E.

**Principal Engineer 1**  
 Christina M. Bachmann, P.E.  
 Mark D. Moder, P.E.  
 Janet Schmidt, P.E.

**Facilities & Sustainability**  
 Jeanne E. Hoffman, Manager  
 Bryan Cooper, Principal Architect

**Mapping Section Manager**  
 Eric T. Pederson, P.S.

**Financial Manager**  
 Steven B. Danner-Rivers

October 29, 2018

NOTICE OF ADDENDUM  
 ADDENDUM NO. 2  
 CONTRACT NO. 8104  
 SHEPARD TERRACE, CHAMBERLAIN AVENUE,  
 VAN HISE AND MASON STREET ASSESSMENT DISTRICT – 2018

Revise and amend the contract document(s) for the above project as stated in this addendum, otherwise, the original document shall remain in effect.

**PROPOSAL:**

Two items have been revised, two items have been deleted and two items have been added in the proposal. See below for a summary. Refer to the proposal for the information.

Action	Bid Item	Description	Original Qty.	New Qty.
REVISED	50211	SELECT BACKFILL FOR STORM SEWER	783.00 T.F.	785.00 T.F.
REVISED	50401	12 INCH TYPE I RCP STORM SEWER PIPE	428.00 L.F.	584.00 L.F.
DELETED	50432	12 INCH TYPE II PAVEMENT STORM SEWER PIPE	355.00 L.F.	-
DELETED	50433	15 INCH TYPE II PAVEMENT STORM SEWER PIPE	115.00 L.F.	-
ADDED	50402	15 INCH TYPE I RCP STORM SEWER PIPE	-	115.00 L.F.
ADDED	50455	FIELD BEND	-	1.00 EACH

**PLANS:**


- U-1: Revised SAS#1 Rim and EI text only to match sanitary sewer schedule. It is drawn correctly.
- U-5: Revised storm sewer to move pipe further away from stone wall. Specifically, added field bend S-14A and moved S-14 further north on curb. Revised pipes P-13 & P-14 and added pipe P-14A.
- U-7: Revised storm sewer schedule to reflect storm sewer design change. Deleted all Type II pipe, all pipe shall be Type I.

Please acknowledge this addendum on page E1 of the contract documents and/or in Section E: Bidder's Acknowledgement on Bid Express.

Electronic version of these documents can be found on the Bid Express web site at: <http://www.bidexpress.com>

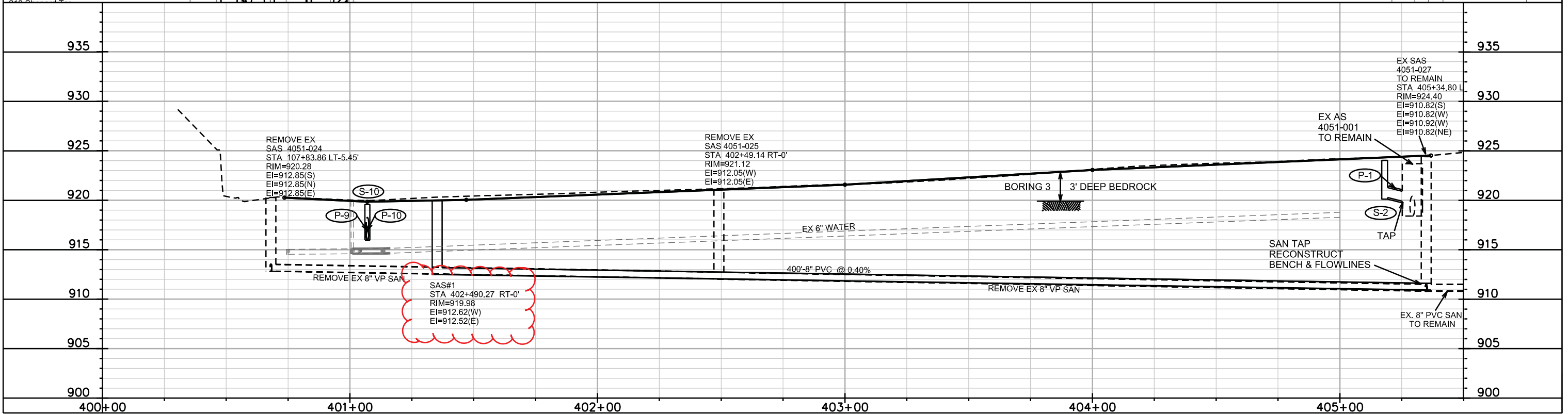
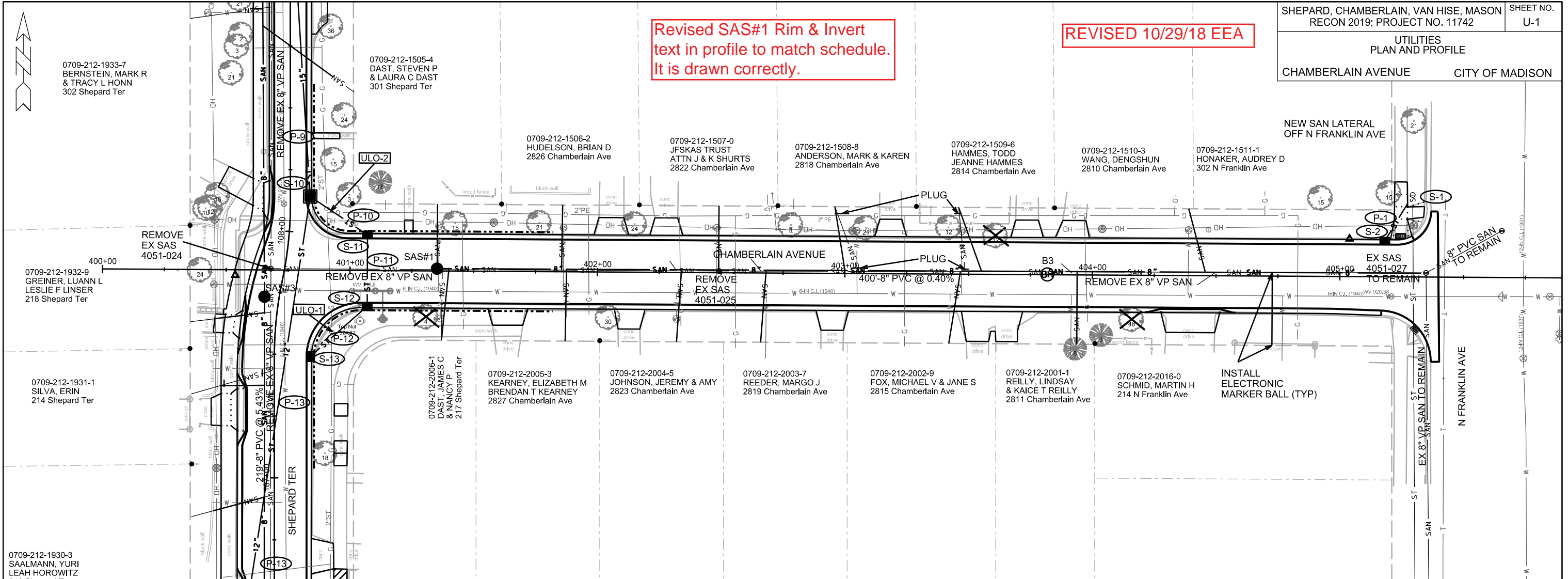
If you are unable to download plan revisions associated with the addendum, please contact the Engineering office at 608-266-4751 receive the material by another route.

Sincerely,

  
 Robert F. Phillips, P.E.  
 City Engineer

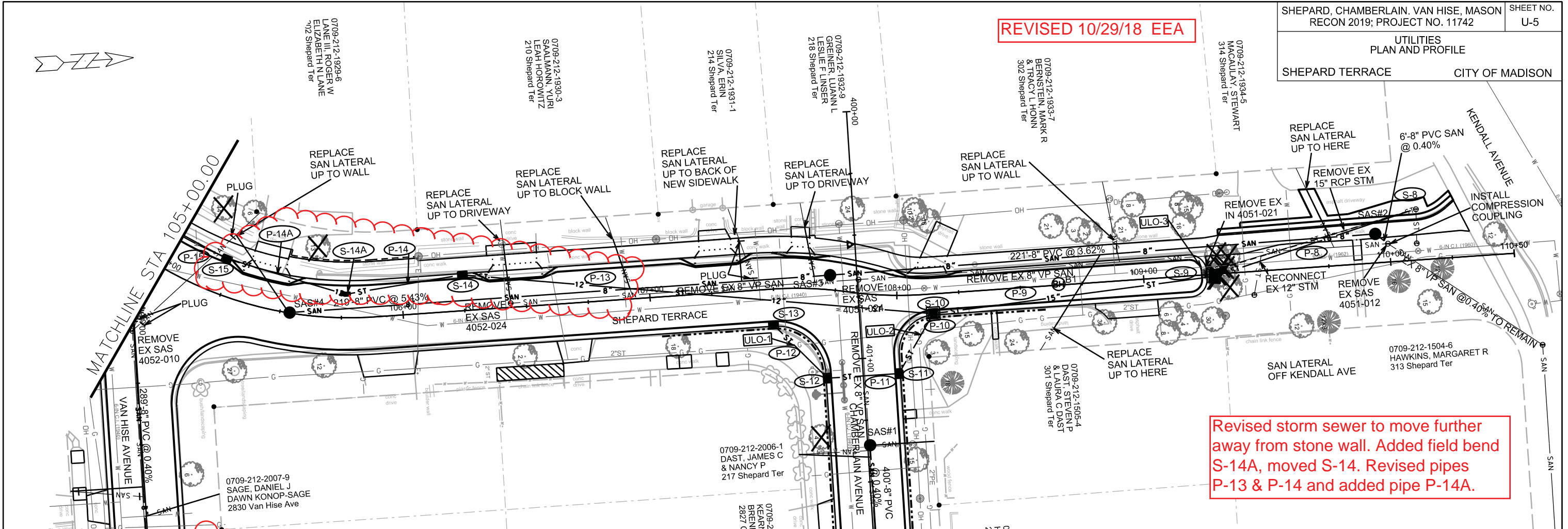
Revised SAS#1 Rim & Invert  
 text in profile to match schedule.  
 It is drawn correctly.

REVISED 10/29/18 EEA

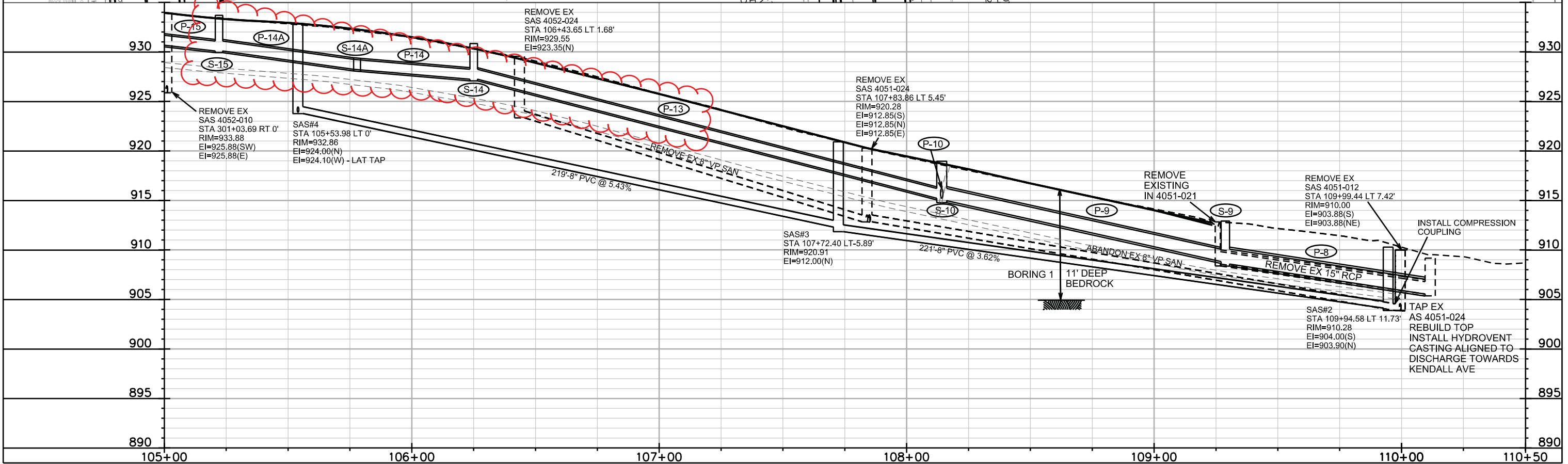


PLOT SCALE: \_\_\_\_\_  
 PLOT NAME: \_\_\_\_\_  
 REV. DATE: \_\_\_\_\_  
 ORIGINATOR: CITY OF MADISON, STREETS DIVISION

REVISED 10/29/18 EEA



Revised storm sewer to move further away from stone wall. Added field bend S-14A, moved S-14. Revised pipes P-13 & P-14 and added pipe P-14A.



PLOT SCALE: \_\_\_\_\_  
 PLOT NAME: \_\_\_\_\_  
 REV. DATE: \_\_\_\_\_  
 ORIGINATOR: CITY OF MADISON, STREETS DIVISION

# STORM SEWER SCHEDULE

## PROPOSED STORM STRUCTURES

STRUC. NO.	STATION	LOCATION (OFFSET)	TYPE	TOP OF CASTING	E.I.	DEPTH	NOTES
<b>CHAMBERLAIN AVE</b>							
S-1	405+29.24	LT-33.14	STORM TAP	-	919.40	-	EX AS 4051-001
S-2	405+18.08	LT-14.50	H INLET	923.98	920.42	3.56	W/ R-3067-7004-V
S-11	401+07.00	LT-14.50	H INLET	919.57	915.97	3.60	LP; W/ R-3067-7004-VB
S-12	401+07.00	RT-14.50	H INLET	920.83	917.23	3.60	LP; W/ R-3067-7004-VB
<b>MASON</b>							
S-3	205+68.21	LT-11.50	STORM TAP	-	931.61	-	EX AS 4052-010
S-4	205+53.81	RT-14.50	H INLET	935.14	931.75	3.39	LP; W/ R-3067-7004-VB
<b>VAN HISE AVE</b>							
S-5	305+66.23	LT-37.00	STORM TAP	-	924.93	-	EX AS 4052-014
S-6	305+50.00	LT-14.50	H INLET	930.54	926.94	3.60	W/ R-3067-7004-V
S-7	305+50.00	RT-14.50	H INLET	930.87	927.27	3.60	LP; W/ R-3067-7004-VB
<b>SHEPARD TERRACE</b>							
S-8	110+11.64	LT-20.54	STORM TAP & REBUILD	-	905.55	-	EX AS 4051-024; (1)
S-9	109+28.77	CL	TERRACE INLET TYPE II	912.68	908.57	4.11	FP
S-10	108+14.27	RT-8.00	4X4 SAS	918.96	914.96	4.00	FP; W/ R-3067-7004-V
S-13	107+48.78	RT-14.50	H INLET	922.17	918.57	3.60	FP; W/ R-3067-7004-V
* S-14	<b>106+25.00</b>	LT-14.50	H INLET	<b>930.84</b>	<b>927.24</b>	3.60	FP; W/ R-3067-7004-V
* S-14A	<b>105+76.50</b>	<b>LT-9.50</b>	<b>FIELD BEND</b>	-	<b>928.24</b>	-	-
S-15	105+22.10	LT-14.50	H INLET	933.69	930.09	3.60	FP; W/ R-3067-7004-V
S-16	104+83.76	LT-14.50	H INLET	934.69	931.09	3.60	W/ R-3067-7004-V
S-17	104+28.90	LT-14.50	H INLET	937.83	934.23	3.60	W/ R-3067-7004-V; (2)

## ULO SCHEDULE

STRUC. NO.	STATION	LOCATION (OFFSET)	TYPE	NOTES
<b>SHEPARD TERRACE</b>				
ULO-1	107+57.98	RT-22.72	GAS	-
ULO-2	108+08.90	RT-16.00	GAS	-
ULO-3	109+23.37	LT-3.05	WATER	-

## SPECIFIC NOTES

- (1) REBUILD TOP; INSTALL HYDROVENT CASTING R-1550 HYDROVENT CASTING TO BE ALIGNED TO DISCHARGE TOWARDS KENDALL AVE
- (2) CONSTRUCT NEW SIDEWALK FLUME / INLET PER BID ITEM 90030 AND DETAIL DRAWING D-4

## PROPOSED STORM PIPES

PIPE NO.	FROM (DNSTM)	TO (UPSTM)	DISCH. E.I.	INLET E.I.	PLAN (PAY) LGTH (FT)	PIPE LGTH (FT)	SLOPE (%)	PIPE SIZE	TYPE	NOTES
* P-1	S-1	S-2	919.40	920.42	22	17	6.00%	12"	TYPE I	-
P-3	S-3	S-4	931.61	931.75	29	24	0.58%	12"	TYPE I	-
* P-5	S-5	S-6	924.93	926.94	28	22	9.14%	12"	TYPE I	-
P-6	S-6	S-7	926.94	927.27	29	27	1.22%	12"	TYPE I	-
P-8	S-8	S-9	905.55	908.57	86	82	3.68%	18"	TYPE I	-
* P-9	S-9	S-10	908.82	914.96	115	112	5.48%	15"	TYPE I	-
P-10	S-10	S-11	915.21	915.97	28	25	3.04%	12"	TYPE I	-
* P-11	S-11	S-12	915.97	917.23	29	27	4.67%	12"	TYPE I	-
P-12	S-12	S-13A	917.23	918.57	31	28	4.79%	12"	TYPE I	-
* P-13	S-10	S-14	915.21	<b>927.24</b>	<b>191</b>	<b>187</b>	<b>6.43%</b>	12"	TYPE I	-
* P-14	S-14	<b>S-14A</b>	<b>927.24</b>	<b>928.24</b>	<b>48</b>	<b>46</b>	<b>2.17%</b>	12"	TYPE I	-
* P-14A	<b>S-14A</b>	<b>S-15</b>	<b>928.24</b>	930.09	<b>50</b>	<b>49</b>	<b>3.78%</b>	12"	TYPE I	-
* P-15	S-15	S-16	930.09	931.09	36	32	3.13%	12"	TYPE I	-
* P-16	S-16	S-17	931.09	934.23	63	60	5.23%	12"	TYPE I	-

## STORM STRUCTURE REMOVALS

ID NO.	STATION	LOCATION (OFFSET)	TYPE	NOTES
<b>MASON</b>				
IN 4052-011	205+55.61	RT-17.43	H INLET	-
<b>SHEPARD TERRACE</b>				
IN 4051-021	109+25.72	CL	H INLET (2)	-

## STORM PIPE REMOVALS

REMOVE FROM	REMOVE TO	LENGTH (FT)	PIPE SIZE	PIPE TYPE	PAID (Y/N)	NOTES
IN 4052-011	S-3	27	12"	VP	N	-
IN 4051-021	S-8	88	15"	RCP	N	-

## STANDARD NOTES:

- ABBREVIATIONS: AE = APRON ENDWALL; RCP = REINFORCED CONCRETE PIPE; HERCP = HORIZONTAL ELLIPTICAL REINFORCED CONCRETE PIPE; DNA = DOES NOT APPLY; SAS = SEWER ACCESS STRUCTURE; LP = LOW POINT INLET STRUCTURE; FP = FIELD POURED STRUCTURE; TR = TOP OF CONCRETE ROOF; NCM = NO CROWN MATCH FOR PIPES; UD = UNDERDRAIN
- APPROXIMATE DISCHARGE E.I. GIVEN, ADJUST E.I. AND PIPE SLOPE IN THE FIELD.
- TOP OF CASTING GRADE GIVEN IS THE TOP OF CURB FOR INLET STRUCTURES AND THE FLOWLINE OF THE CLOSED CASTING FOR SAS's.
- TOP OF CONCRETE ROOF (TR) IS 1.25' BELOW TOP OF CASTING UNLESS OTHERWISE NOTED.
- ALL REINFORCED CONCRETE PIPES TO BE CLASS III UNLESS OTHERWISE NOTED.
- SURVEYOR TO CONFIRM THAT ALL INLET STATION / OFFSETS LINE UP WITH PROPOSED CURB AND GUTTER.
- ALL STRUCTURES CALLED OUT AS FIELD POURED SHALL BE FIELD POURED. ALL OTHER STRUCTURES (NOT INDICATED AS FIELD POURED) SHALL BE SUBMITTED TO CITY ENGINEERING FOR APPROVAL IF PRECAST STRUCTURES ARE PREFERRED. CONTACT ELIA E. ACOSTA OF CITY ENGINEERING AT (608) 266-4096 FOR PRECAST APPROVALS, FAX SHOP DRAWINGS TO (608)264-9275, OR EMAIL SHOP DRAWINGS TO EACOSTA@CITYOFMADISON.COM.